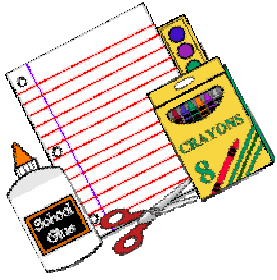
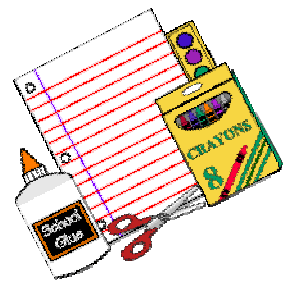


5TH GRADE

2010-2011 PRAIRIE HILL SCHOOL STUDENT SUPPLY LIST

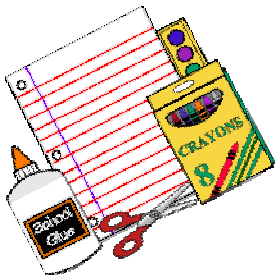


ITEM	QUANTITY
#2 Pencils	12
Sharpie Fine Tip Marker	2 Black
Pens	1 Blue or 1 Black & 4 Red
7" Colored Pencils (12 Count)	1 Box
Highlighter	2
Fine And Wide Tip Markers (8 Count)	1 Box Of Each
Crayola Crayons (24 Count)	1 Box
12" Clear Plastic Ruler, Inches & Metric	1
Post-It Notes 1½" x 2"	2 Packages
Post-It-Notes 3" x 3"	2 Packages
Tissues (200 Count)	2 Boxes
Scotch Transparent Tape With Dispenser (½" x 500")	2 Rolls
Scissors – Pointed	1 Pair
Glue Stick	3 Sticks
Wide Ruled Filler Paper (200 Count)	2 Packages
Wide Lined Spiral Notebook Solid Colors - Red, Green, Blue, Yellow, and Purple	5
Copy Paper – White, 20 Lb., 500 Sheets, 8 ½" x 11"	1
Plastic Pocket Folders Solid Colors - Red, Green, Blue, Yellow, and Purple	5
Gallon Ziploc Bags – GIRLS ONLY	1 Box
Sandwich Ziploc Bags – BOYS ONLY	1 Box
Red Plastic Pocket Folder With 2 Pockets – For Take Home Materials	1
Headphones With 3.5mm Plug	1 Pair
3" x 5" RULED Index Cards (100 Count)	1 Package
District Approved Calculator: Texas Instruments TI-30Xa	1
District Approved Assignment Notebook (Purchased At Prairie Hill School)	Price TBD
One pair gym shoes with non-marking soles (no slip-ons or heels) and one white T-shirt with first name on the front in 2" letters.	These are Physical Education supplies to be left at school.



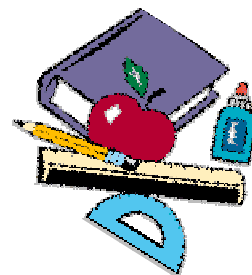
PLEASE NOTE: Your child's teacher will request additional items at the start of the school year. Supplies will need to be replenished throughout the year.

Please NO "WHEELIES" when purchasing a tote bag or backpack and NO TRAPPER KEEPERS.

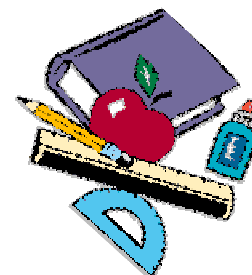


6TH GRADE

2010-2011 PRAIRIE HILL SCHOOL STUDENT SUPPLY LIST



ITEM	QUANTITY
#2 Pencils	12
Pens, Black Or Blue	6
Pens, Red	4
7" Colored Pencils (12 Count)	1 Box
Yellow Highlighter	2
Permanent Black Marker	1
Dry Erase Marker	2
Fine Tip Markers (8 Count)	1 Box
Wide Tip Markers (8 Count)	1 Box
Crayola Crayons (24 Count)	1 Box
3-Hole Pencil Pouch (No Boxes)	2
Flexible 12" Ruler – Inches & Metric	1
Post-It Notes, 3" x 3"	2 Pads
Gallon Ziploc Bags	1 Box
Transparent Tape With Dispenser (½" x 500") – Scotch Brand Only	3 Rolls
Scissors – Pointed	1 Pair
Glue Stick	2 Sticks
Construction Paper – 8" x 11"	1 Package
Spiral Notebook	2
Wide Ruled Filler Paper (200 Count)	2 Packages
Copy Paper – White, 20 Lb., 500 Sheets, 8 ½" x 11"	1
Six Pocket Plastic Accordion File (Expandable) With Cover	1
Three-Ring Binder (1 ½")	2
3" x 5" White Ruled Index Cards - Must Be Ruled (100 Count)	2 Packages
Dividers (5-Tab)	2 Packages
Tissues (200 Count)	2 Boxes
Headphones With 3.5mm Plug	1 Pair
District Approved Calculator: Texas Instruments TI-30Xa	1
District Approved Assignment Notebook (Purchased At Prairie Hill School)	\$3.00
One pair gym shoes with non-marking soles (no slip-ons or heels) and one white T-shirt with first name on the front in 2" letters.	These are Physical Education supplies to be left at school.



PLEASE NOTE: Your child's teacher may request additional items at the start of the school year. More specifics will be discussed at Open House. Supplies will need to be replenished throughout the year.

Please NO "WHEELIES" when purchasing a tote bag or backpack.

